

**Colored Stucco Finish Coat**

**DESCRIPTION** • *ArtCrete 801* is a polymer modified, fiber reinforced, cement based, colored finish stucco formulated for high adhesion, flexibility, and unparallelled weathering. *ArtCrete 801* is designed to be applied in 2-20 mm thicknesses over a variety of surfaces such as concrete, gray plaster, cement board, or plywood, without the need for a scratch coat on smooth surfaces in thicknesses up to 8 mm or 20 mm for rough surfaces. Due to its unique workability and ease of use, *ArtCrete 801* can be finished in an endless variety of textures ranging from heritage texture to polished finish simulating fair faced concrete.

**USES** • *ArtCrete 801 Colored Stucco Finish* is designed for use as a finishing coat on exterior and interior walls and facades ranging from residential to heavy commercial and industrial buildings. *ArtCrete 801* may be applied directly on precast concrete surfaces on fair faced plaster as part of a three-coat system, or in thin coats on gypsum or cement board. Due to its extreme weatherability and durability, *ArtCrete 801* is superior to traditional acrylic paint for finishing facades.

**ADVANTAGES**

- ✓ Highly flexible and resistant to cracking.
- ✓ No scratch coat required on smooth surfaces for up to 8 mm.
- ✓ Breathable, allowing humidity to escape.
- ✓ Cement-based; compatible with substrate.
- ✓ Minimum need for maintenance.
- ✓ Extremely durable for all climates.
- ✓ Integrally colored with UV-resistant pigments.
- ✓ Self-curing.
- ✓ Unlimited choice of finishing textures.

**PERFORMANCE CHARACTERISTICS**

**Weather Resistance:** *ArtCrete 801's* mineral base allows it to be breathable and resistant to weathering, thereby chipping and flaking proof.

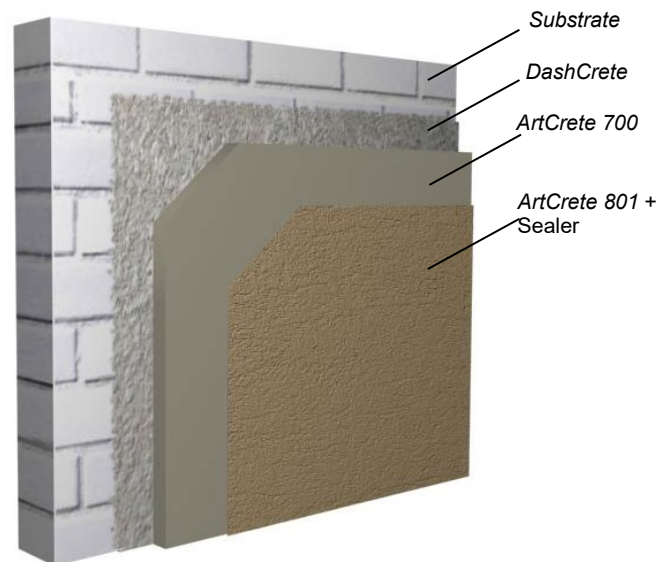
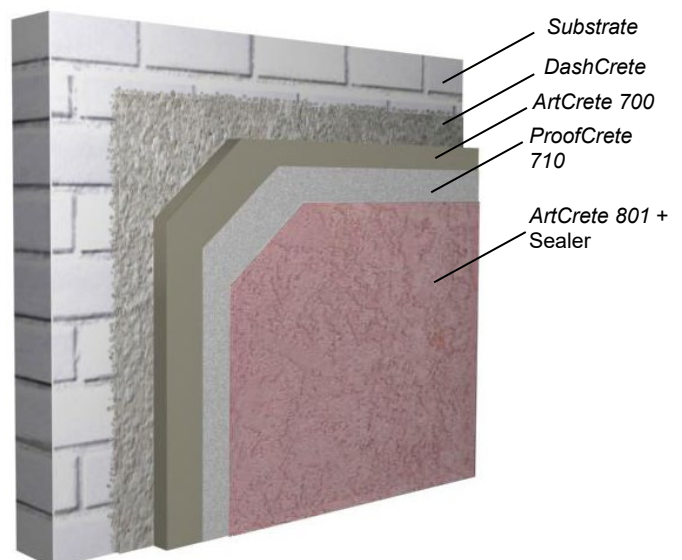
**Tensile Strength:** *ArtCrete 801* is able to resist tensile stresses, whether developed internally or externally, due to the material properties' compatibility with a cement-based substrate.

**Crack Resistance:** Polymer modification and fiber fortification render *ArtCrete 801* resistant to cracking.

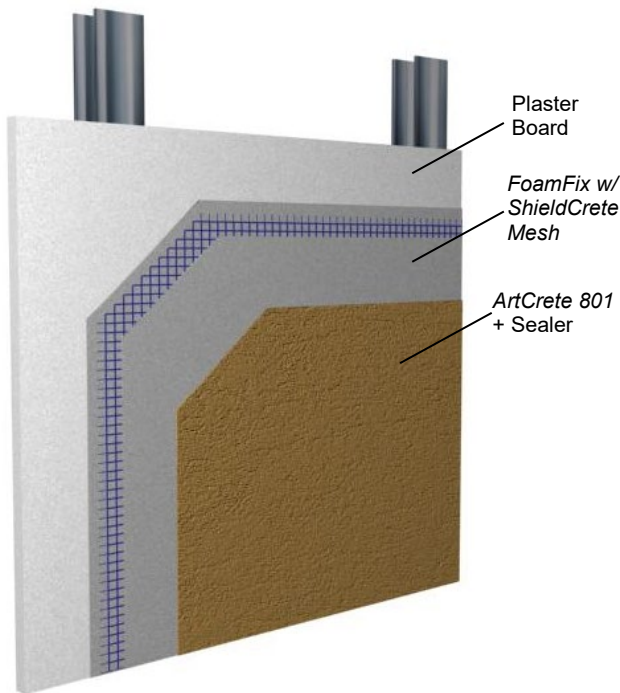
**Bond:** Due to the high polymer modification, *ArtCrete 801's* high bond strength allows it to be applied on fair faced surfaces in up to 8-10 mm thickness without the need for a scratch coat.

**COVERAGE** • Coverage depends on application technique, finish texture, surface irregularities and roughness, and worker skill. Typical coverage is approximately 6-7 m<sup>2</sup>/25 kg bag at 3 mm thickness.

**LIMITATIONS** • Do apply if ambient temperature is expected to drop below 5°C during installation or in the proceeding 24 hours, or if rain is expected in the proceeding 24-hour period after application. Do not apply when ambient temperature is expected to exceed 40°C. Avoid working in direct sunlight.

**SYSTEM CONFIGURATION**ArtCrete 3-Coat System:ArtCrete 5-Coat System:

ArtCrete Plus System:



**SURFACE PREPARATION** • Any paint, coatings, curing agents, or contamination on the substrate should be removed before application of ArtCrete 801, preferably by mechanical means. Adhesion of ArtCrete 801 requires only an absorbent surface, therefore ArtCrete 801 is very compatible with masonry surfaces and can be applied on an array of bases: block, brick, plaster, gypsum board, and wood panels. All bases should be sufficiently rigid, clean of any surface contamination that may prevent good suction. High gloss, or low absorption surfaces can be made more receptive by mechanical means.

To reduce material consumption, the base should be straight, true to line, and plane. Misalignment of substrate can be corrected with ArtCrete 700 Brown Coat Ready Mix Plaster or FoamFix ST Base Coat.

**MIXING** • Mixing should be done by a mechanical method, preferably with a paddle type mixer. Drill mounted jiffy type mixers can also be used. Always add clean potable water first. Mixing duration should last for 3 to 5 minutes to insure proper color and material dispersion within the mix. Typically, one 25 kg bag will require 4.5-5.5 liters of water, though the plasterer can best judge the required consistency depending on the desired finish, while observing its workability and the degree of bonding to the substrate. However, care should be taken not to exceed 7 liters of water per 25 kg bag.

**APPLICATION** • ArtCrete 801 can be applied by hand or machine to a thickness of not less than 2mm. A maximum of 8-10mm on smooth surfaces can be achieved without the need for a scratch coat, otherwise apply a thin scratch coat of ArtCrete 801 and allow to set for a few hours before applying a thicker coat. On rough surfaces applications of up to 20 mm are possible without the need for a scratch coat.

A steel trowel, wood float and a sponge float are used in conjunction with a small amount of clean water to produce any texture desired. Anywhere from a smooth steel trowel to a Spanish finish can be attained. Different textures may be obtained by layering thin coats of ArtCrete 801 on top of each other, whether wet-on-wet or wet-on-dry.

The application of a coat of plaster should not be interrupted within a façade, the applicator must plan ahead to complete the work up to either a control joint or to a corner of a façade before halting the application for any reason. When using a plaster machine, the plaster is applied in a continuous operation and finished manually to the specified thickness. Texture is controlled by the air pressure, the opening of the orifice, and the distance of the nozzle from the surface.

Installation on Block Work: For block work, ArtCrete 3-Coat System is the most economical configuration. As shown in the illustration above, DashCrete is first

**TECHNICAL DATA** •

Test	Criteria	Result
Flexural Strength EN 12808-3:2002 ASTM C 348 7 days 28 days	≥ 3.5 N/mm <sup>2</sup> n/a	3.5 N/mm <sup>2</sup>  3.2 N/mm <sup>2</sup> 6.6 N/mm <sup>2</sup>
Compressive Strength EN 12808-3:2002 ASTM C 109 3 days 7 days 28 days	≥ 2.5 N/mm <sup>2</sup> n/a	9.7 N/mm <sup>2</sup>  7.0 N/mm <sup>2</sup> 13.4 N/mm <sup>2</sup> 18.3 N/mm <sup>2</sup>
Abrasion Resistance (EN 12808-2:2002)	≤ 2,000 mm <sup>3</sup>	276 mm <sup>3</sup>
Shrinkage Test - 28 days (EN 12808-4)	≤ 2 mm/m	1.26 mm/m
Water Absorption (EN 12808-5) After 30 minutes After 240 minutes	≤ 5 g ≤ 10 g	2.33 g 5.08 g
Tensile Adhesion (EN 998)	≥ 0.3 N/mm <sup>2</sup>	0.58 N/mm <sup>2</sup>
VOC (w/A-Z Penetrating Sealer WB), USEPA 24	n/a	0 g/L
Ignitability, BS EN ISO 11925-2	n/a	Class E (non ignitable)
Salt Spray Resistance ASTM B 117, 150 hrs. 5% NaCl	n/a	Pass
Pencil Hardness ASTM D 3363-05	n/a	> 6H
Density		1.86 g/l

## ArtCrete 801 Colored Stucco Finish Coat

installed on a block work or concrete wall for a keying coat, followed with a leveling coat of *ArtCrete 700 Pre-Blended Plaster* in 10-20 mm thickness. *ArtCrete 801* is then applied as the final colored finish coat.

For additional protection against moisture and efflorescence problems, *ArtCrete 5-Coat System* is the highest performing system. An additional layer of *ProofCrete 710 Single Component Flexible Cementitious Waterproofing* provides an isolation layer between the finish coat and the substrate.

Installation on Plaster Board: For installation on gypsum or cement board, follow the *ArtCrete Plus System* illustrated above. Install a base layer of *FoamFix ST* with fiberglass mesh such as *ShieldCrete SD 125 g mesh* or *ShieldCrete SD 160 g mesh*. For moisture sensitive surfaces such as gypsum or wood boards, it is recommended to first roll=apply a coat of *A-Z Prime Bond*; while still tacky apply the *FoamFix ST* coat. It is recommended to pre-treat board joints either with an extra layer of *FoamFix* and fiberglass mesh.

Installation on Field Mixed Plaster: If the quality of the gray plaster is questionable, installing a base layer of *FoamFix ST* with an embedded fiberglass mesh as detailed in the *ArtCrete Plus System* may help reduce the chances of small cracks in the gray plaster from reflecting onto the *ArtCrete 801* finish coat. The *FoamFix* layer also acts as a good isolation layer that can reduce efflorescence problems from appearing in the finish coat.

**CURING** • *ArtCrete 801* is self-curing and designed to be air cured only. The use of *A-Z 100 Curing Agent* is recommended when applying on surfaces permanently in contact with water or under high wind conditions.

**SEALING** • In order to avoid staining of the render from rain runoff water or other sources and to facilitate easy cleaning, it is highly recommended to seal the render once it has fully set. The render may be sealed with any grade of *A-Z Penetrating Sealer*, or *A-Z HydroSeal* for more demanding applications. On surfaces subject to wet conditions, the use of *A-Z HydroSeal* is recommended.

**CLEANING** • Clean all tools and equipment promptly with clean water.

**STORAGE** • Keep material covered and off the ground to prevent exposure to moisture. Store in a dry area. When stored at specified conditions in original unopened packaging, shelf life is 12 months from date of purchase.

**SAFETY PRECAUTIONS** • KEEP OUT OF REACH OF CHILDREN. DO NOT TAKE INTERNALLY. Portland cement and silica based products present health hazards. Irritating to eyes and skin. Use in adequate ventilation and do not breath dust. Contains silica aggregates (quartz). May cause delayed lung injury (silicosis). Use neoprene gloves and a dust mask when handling. FIRST AID: Eyes – Do not rub eyes, immediately flush with fresh water. Skin – Wash with soap and water. Inhalation – If experience difficulty breathing or if inhaled, move to fresh air. If symptoms persist, seek medical attention.

**PACKAGING** • 25 kg paper bags.

**SUGGESTED SHORT FORM SPECIFICATIONS** • All architectural surfaces designated in the plans or specifications as having an integrally colored stucco finish shall have CREATIVE CONCRETE CONCEPTS ArtCrete 801™ installed in accordance with manufacturer technical data sheet and written instructions in the ArtCrete [3-Coat, 5-Coat] System. The dash coat shall be CREATIVE CONCRETE CONCEPTS DashCrete™ Splatter Dash Coat applied over the block work substrate in accordance with manufacturer technical data sheet and instructions. The leveling brown coat shall be CREATIVE CONCRETE CONCEPTS ArtCrete 700™ Factory Blended Plaster applied in [ ] mm thickness and cured in accordance with manufacturer technical data sheet and instructions. [For 5-coat system only: Waterproofing coat shall be CREATIVE CONCRETE CONCEPTS ProofCrete 709™ Single Component Cementitious Waterproofing Coat applied in accordance with manufacturer technical data sheet and instructions]. The finish coat shall be CREATIVE CONCRETE CONCEPTS ArtCrete 801™ Colored Stucco Finish Coat applied in [ ] mm thickness in required texture and color [select from CCC Standard Color Chart]. All finished surfaces must be sealed with CREATIVE CONCRETE CONCEPTS [A-Z Penetrating Sealer WB/LS/SB/SMK™, A-Z HydroSealer™] in accordance with manufacturer technical data sheet and instructions. All products shall be manufactured by CREATIVE CONCRETE CONCEPTS, Sharjah, UAE or Amman, Jordan; info@tex-crete.com.

### Creative Concrete Concepts

PO Box 925794, Amman 1110, Jordan; Tel +962-6-487-4078, Fax +962-6-488-9133 • PO Box 91234, City of Industry, CA 91715-1234, USA; Tel +1-909-266-0709, Fax +1-909-266-0711 • PO Box 31017, Sharjah, UAE; Tel +971-6-532-1119, Fax +971-6-532-8833